



- Lamp: Flashing beacon – XENON (5 J) / LED (6.5 W)
- Type of protection: Ex d
- Class: IP66/IP67 (IEC 60529 / NEMA 4X)
- Corrosion-resistant GRP enclosure
- Stainless steel protection cage and mounting bracket included
- 8 light-intensifying Fresnel lens colours available to order
- Telephone system connection/line monitoring optionally available to order

E5

WebCode **FL6SA**



**Product series FL6S** is designed to provide a visual alarm which can be used to alert, warn or draw attention to machine malfunction/start up or any number of safety related issues. Corrosion resistance is a key feature of the device which is ideally suited for applications in the harshest of environments both onshore and offshore.

	IECEX / ATEX					
Zone	0	1	2	20	21	22
Installation in		•	•		•	•

Selection Table				
Rated operational voltage AC		115 V		
Lens colour	Product Type	Art. No.	Weight kg	
Clear	FL6S/C-L-050-C-EN-SF-A-ST-00-00-00	225162	3.040	
Red	FL6S/C-L-050-R-EN-SF-A-ST-00-00-00	225165	3.040	
Yellow	FL6S/C-L-050-Y-EN-SF-A-ST-00-00-00	225164	3.040	
Rated operational voltage AC		230 V		
Lens colour	Product Type	Art. No.	Weight kg	
Amber	FL6S/C-N-050-A-EN-SF-A-ST-00-00-00	225174	3.040	
Clear	FL6S/C-N-050-C-EN-SF-A-ST-00-00-00	225170	3.040	
Green	FL6S/C-N-050-G-EN-SF-A-ST-00-00-00	225176	3.040	
Red	FL6S/C-N-050-R-EN-SF-A-ST-00-00-00	225173	3.040	
Yellow	FL6S/C-N-050-Y-EN-SF-A-ST-00-00-00	225172	3.040	
Rated operational voltage DC		24 V		
Lens colour	Product Type	Art. No.	Weight kg	
Amber	FL6S/C-D-050-A-EN-SF-A-ST-00-00-00	225150	3.040	
Blue	FL6S/C-D-050-B-EN-SF-A-ST-00-00-00	225151	3.040	
Clear	FL6S/C-D-050-C-EN-SF-A-ST-00-00-00	225146	3.040	
Green	FL6S/C-D-050-G-EN-SF-A-ST-00-00-00	225152	3.040	
Magenta	FL6S/C-D-050-M-EN-SF-A-ST-00-00-00	225153	3.040	
Opal	FL6S/C-D-050-O-EN-SF-A-ST-00-00-00	225147	3.040	

Selection Table				
Rated operational voltage DC	24 V			
Lens colour	Product Type		Art. No.	Weight kg
Red	FL6S/C-D-050-R-EN-SF-A-ST-00-00-00		225149	3.040
Yellow	FL6S/C-D-050-Y-EN-SF-A-ST-00-00-00		225148	3.040
Rated operational voltage DC	48 V			
Lens colour	Product Type		Art. No.	Weight kg
Amber	FL6S/C-F-050-A-EN-SF-A-ST-00-00-00		225158	3.040
Clear	FL6S/C-F-050-C-EN-SF-A-ST-00-00-00		225154	3.040
Red	FL6S/C-F-050-R-EN-SF-A-ST-00-00-00		225157	3.040




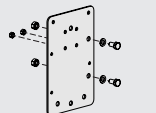
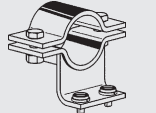
Further variations in gas group, flash energy, voltage and lens colour are available, please use the selection table on the internet at r-stahl.com. WebCode FL6SA

Technical Data				
Variant	FL6S/-L	FL6S/-N	FL6S/-F	
<b>Explosion Protection</b>				
IECEX gas explosion protection	Ex d IIC T5/T4 Gb	Ex d IIC T6/T5/T4 Gb	Ex d IIC T6/T5/T4 Gb	
IECEX dust explosion protection	Ex tb IIIC T83 °C ... T113 °C Db	Ex tb IIIC T75 °C ... T90 °C ... T105 °C Db	Ex tb IIIC T73 °C ... T88 °C ... T103 °C Db	
ATEX gas explosion protection	Ⓜ II 2 G Ex d IIC T5/T4 Gb	Ⓜ II 2 G Ex d IIC T6/T5/T4 Gb	Ⓜ II 2 G Ex d IIC T6/T5/T4 Gb	
ATEX dust explosion protection	Ⓜ II 2 D Ex tb IIIC T83 °C ... T113 °C Db	Ⓜ II 2 D Ex tb IIIC T75 °C ... T90 °C ... T105 °C Db	Ⓜ II 2 D Ex tb IIIC T73 °C ... T88 °C ... T103 °C Db	
IECEX gas explosion protection	Ex d IIC T4 Gb	Ex d IIC T5 Gb	Ex d IIC T5 Gb	
IECEX dust explosion protection 2	Ex tb IIIC T113 °C Db	Ex tb IIIC T90 °C Db	Ex tb IIIC T88 °C Db	
ATEX gas explosion protection	Ⓜ II 2 G Ex d IIC T4 Gb	Ⓜ II 2 G Ex d IIC T5 Gb	Ⓜ II 2 G Ex d IIC T5 Gb	
ATEX dust explosion protection 2	Ⓜ II 2 D Ex tb IIIC T113 °C Db	Ⓜ II 2 D Ex tb IIIC T90 °C Db	Ⓜ II 2 D Ex tb IIIC T88 °C Db	
Certificates	ATEX (BAS), IECEx (BAS)	ATEX (BAS), IECEx (BAS)	ATEX (BAS), IECEx (BAS)	
<b>Electrical Data</b>				
Line monitoring	Yes	Yes	Yes	
Tolerance	-10 – 10 %	-10 – 10 %	-10 – 10 %	
<b>Lighting Data</b>				
Lamp	Xenon flash tubes	Xenon flash tubes	Xenon flash tubes	
Flashbulb	5 J	5 J	5 J	
Flash rate	1 Hz	1 Hz	1 Hz	
<b>Mechanical Data</b>				
IP degree of protection (IEC 60529)	IP66/IP67	IP66/IP67	IP66/IP67	
Class	II / Equipotential bonding connection	II / Equipotential bonding connection	II / Equipotential bonding connection	
Enclosure material	Polyester (GRP), Glass fibre reinforced	Polyester (GRP), Glass fibre reinforced	Polyester (GRP), Glass fibre reinforced	
Sealing material	Red silicone 70	Red silicone 70	Red silicone 70	
Material dome	Polycarbonate, prismatic	Polycarbonate, prismatic	Polycarbonate, prismatic	
Wire guard material	Stainless steel	Stainless steel	Stainless steel	
Max. solid connection terminals	2.5 mm <sup>2</sup>	2.5 mm <sup>2</sup>	2.5 mm <sup>2</sup>	
Max. finely stranded connection terminals	2.5 mm <sup>2</sup>	2.5 mm <sup>2</sup>	2.5 mm <sup>2</sup>	
Enclosure colour	Black	Black	Black	
Seal	O-ring seal	O-ring seal	O-ring seal	
<b>Mounting / Installation</b>				
Mounting part material	Stainless steel	Stainless steel	Stainless steel	
<b>Components</b>				
Drilled holes	2 x M20	2 x M20	2 x M20	
Cable glands and entries	Can be ordered as accessories	Can be ordered as accessories	Can be ordered as accessories	
Stopping plugs	2 x dust cap	2 x dust cap	2 x dust cap	


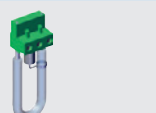

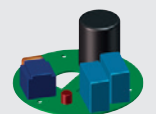
You can find more technical data online at [r-stahl.com](http://r-stahl.com). WebCode FL6SA

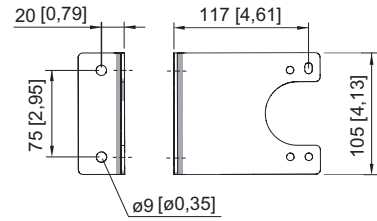
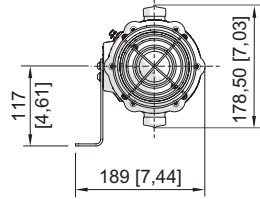
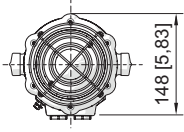
E5

## Accessories

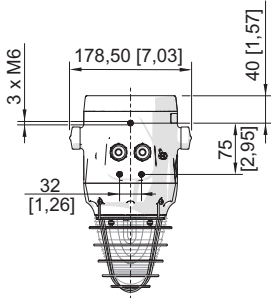
Figure	Description	Art. No.	Weight kg
<b>Cable glands made of metal</b>			
	Ex d & Ex e cable entry with compound for all types of armoured cables (SWA, braided, tape) (nickel-plated brass) Type 20PX2K, M20 x 1.5	109428 ▲	0.240
	Ex d & Ex e Cable entry with RapidEx sealing system for all types of unarmoured and braid armour cables (nickel-plated brass) Type 20PX2K-REX, M20 x 1.5	246649 ■	0.240
	Ex d & Ex e Cable entry with compound gland for all types of unarmoured and braid armour cables (nickel plated brass) Type 20PXSS2K, M20 x 1.5	109441 ▲	0.200
	Ex d & Ex e Cable entry with RapidEx sealing system for all types of unarmoured and braid armour cables (nickel-plated brass) Type 20PXSS2K-REX, M20 x 1.5	246605 ■	0.200
<b>Mounting accessories</b>			
	L-bracket, long, stainless steel (available for FL6S, FX15, YA60, YL6S, YA6S, YL60)	247371	0.280
	Adapter plate for pipe clamp fastening (available for FL6S, FX15, YL6S)	256519	0.630
	Pipe clamp, R 1 1/2"	120819	0.470
	Pipe clamp, R 1 1/4"	120812	0.500
	Pipe clamp, R 2"	120823	0.500

## Spare Parts

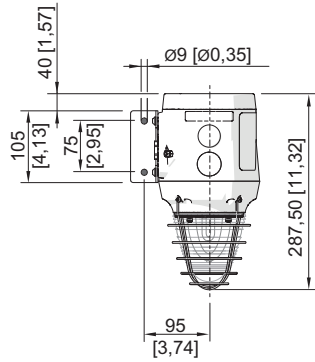
Figure	Description	Art. No.	Weight kg
<b>Fresnel lens</b>			
	Fresnel lens blue replacement	292141	0.180
	Fresnel lens red replacement	292147	0.180
<b>Lamp</b>			
	Xenon lamp (available for FL6S, FX15, YL6S)	223636	0.006
<b>PCB</b>			
	Connection PCB (available for FL6S, FX15, YL6S)	223579	0.020
	Electronic PCB, 115 V AC, 5 J (available for FL6S, FX15, YL6S)	223632	0.118
	Electronic PCB, 230 V AC, 5 J (available for FL6S, FX15, YL6S)	223580	0.100
	Electronic PCB, 24 V DC, 5 J (available for FL6S, FX15, YL6S)	223635	0.080



L-Bracket



GRP Visual Signal Series FL6S without L-Bracket



GRP Visual Signal Series FL6S with L-Bracket