

# Visual Signalling Device

Series FX15 - Ex d, XENON / LED, GRP

STAHL



- Lamp: Flashing beacon – XENON (5 J) / continuous beacon – LED (6.5 W)
- Type of protection: Ex d
- Class: IP66/IP67 (IEC 60529 / NEMA 4X)
- Corrosion-resistant GRP enclosure
- Stainless steel protection cage included
- 8 light-intensifying Fresnel lens colours available to order
- Low weight (2.25 kg)

E5

WebCode FX15A



**Product series FX15** provides visual signals from a continuous beacon with an LED or a 5 J lashing beacon with xenon flashes. The enclosure is made of glass fibre reinforced polyester. The product series is intended for use in hazardous areas and harsh environments.

	IECEX / ATEX					
Zone	0	1	2	20	21	22
Installation in		•	•		•	•

Selection Table				
Lamp	LED			
Rated operational voltage AC	100 – 254 V			
Lens colour	Product Type	Art. No.	Weight	kg
Amber	FX15/C-P-060-A-EN-SF-A-ST-00-00-00	247077	2.250	
Blue	FX15/C-P-060-B-EN-SF-A-ST-00-00-00	247069	2.250	
Clear	FX15/C-P-060-C-EN-SF-A-ST-00-00-00	247085	2.250	
Green	FX15/C-P-060-G-EN-SF-A-ST-00-00-00	247061	2.250	
Red	FX15/C-P-060-R-EN-SF-A-ST-00-00-00	247093	2.250	
Lamp	LED			
Rated operational voltage DC	24 V			
Lens colour	Product Type	Art. No.	Weight	kg
Amber	FX15/C-D-060-A-EN-SF-A-ST-00-00-00	247078	2.230	
Blue	FX15/C-D-060-B-EN-SF-A-ST-00-00-00	247070	2.230	
Clear	FX15/C-D-060-C-EN-SF-A-ST-00-00-00	247086	2.230	
Green	FX15/C-D-060-G-EN-SF-A-ST-00-00-00	247062	2.230	
Magenta	FX15/C-D-060-M-EN-SF-A-ST-00-00-00	251767	2.230	
Red	FX15/C-D-060-R-EN-SF-A-ST-00-00-00	247094	2.230	
Lamp	Xenon flash tubes			
Rated operational voltage AC	115 V			
Lens colour	Product Type	Art. No.	Weight	kg
Amber	FX15/C-L-050-A-EN-SF-A-ST-00-00-00	217981	2.250	
Clear	FX15/C-L-050-C-EN-SF-A-ST-00-00-00	217983	2.250	

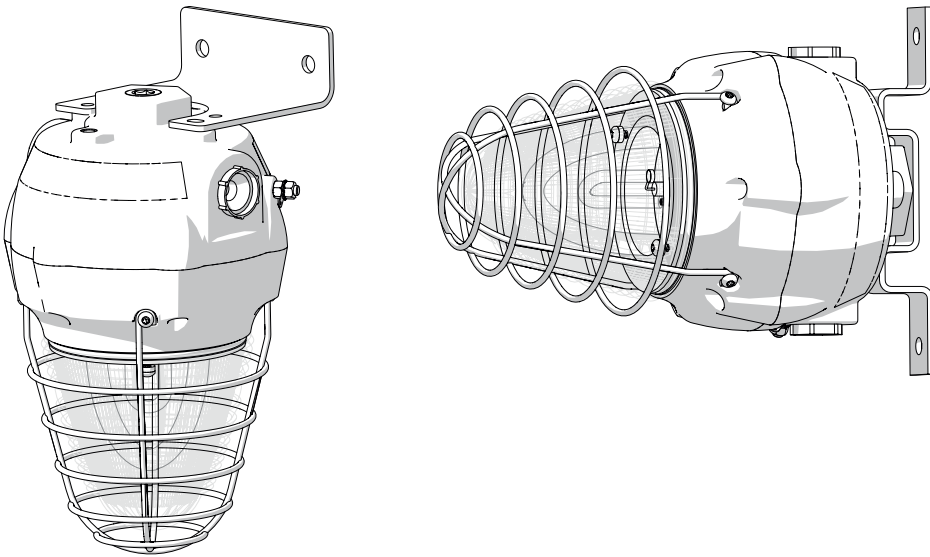
1


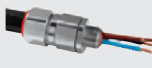


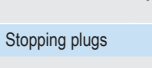





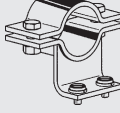
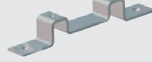
Selection Table				
Lamp Rated operational voltage AC	Xenon flash tubes 115 V			
Lens colour	Product Type	Art. No.	Weight kg	
Green	FX15/C-L-050-G-EN-SF-A-ST-00-00-00	217993	2.250	
Red	FX15/C-L-050-R-EN-SF-A-ST-00-00-00	217973	2.250	
Lamp Rated operational voltage AC	Xenon flash tubes 230 V			
Lens colour	Product Type	Art. No.	Weight kg	
Amber	FX15/C-N-050-A-EN-SF-A-ST-00-00-00	217982	2.250	
	FX15/C-N-050-A-RU-SF-A-ST-00-00-00	250498	2.250	
Blue	FX15/C-N-050-B-EN-SF-A-ST-00-00-00	218002	2.250	
Clear	FX15/C-N-050-C-EN-SF-A-ST-00-00-00	217995	2.250	
Green	FX15/C-N-050-G-EN-SF-A-ST-00-00-00	218003	2.250	
	FX15/C-N-050-G-RU-SF-A-ST-00-00-00	257179	2.250	
Red	FX15/C-N-050-R-EN-SF-A-ST-00-00-00	217974	2.250	
	FX15/C-N-050-R-RU-SF-A-ST-00-00-00	238878	2.250	
Yellow	FX15/C-N-050-Y-EN-SF-A-ST-00-00-00	218001	2.250	
	FX15/C-N-050-Y-RU-SF-A-ST-00-00-00	250499	2.250	
Lamp Rated operational voltage DC	Xenon flash tubes 24 V			
Lens colour	Product Type	Art. No.	Weight kg	
Amber	FX15/C-D-050-A-EN-SF-A-ST-00-00-00	217979	2.230	
	FX15/C-D-050-A-RU-SF-A-ST-00-00-00	239122	2.230	
Blue	FX15/C-D-050-B-EN-SF-A-ST-00-00-00	217992	2.230	
Clear	FX15/C-D-050-C-EN-SF-A-ST-00-00-00	217989	2.230	
Green	FX15/C-D-050-G-EN-SF-A-ST-00-00-00	217997	2.230	
Red	FX15/C-D-050-R-EN-SF-A-ST-00-00-00	217971	2.230	
	FX15/C-D-050-R-RU-SF-A-ST-00-00-00	239121	2.230	
Yellow	FX15/C-D-050-Y-EN-SF-A-ST-00-00-00	217991	2.230	
	FX15/C-D-050-Y-RU-SF-A-ST-00-00-00	252025	2.230	






Technical Data		
Variant	FX15/-P-060-LED	FX15/-N-050-Xenon flash tubes
Explosion Protection		
IECEX gas explosion protection	Ex d IIC T6 Gb	Ex d IIC T6/T5/T4 Gb
IECEX dust explosion protection	Ex tb IIIIC T85 °C Db	Ex tb IIIIC T75 °C ... T90 °C ... T105 °C Db
ATEX gas explosion protection	Ⓜ II 2 G Ex d IIC T6 Gb	Ⓜ II 2 G Ex d IIC T6/T5/T4 Gb
ATEX dust explosion protection	Ⓜ II 2 D Ex tb IIIIC T85 °C Db	Ⓜ II 2 D Ex tb IIIIC T75 °C ... T90 °C ... T105 °C Db
Certificates	ATEX (BAS), IECEx (BAS)	ATEX (BAS), IECEx (BAS)
Electrical Data		
Tolerance	-10 – 10 %	-10 – 10 %
Ambient Conditions		
Operating temperature	-60 °C ... +50 °C	-55 °C ... +70 °C
Mechanical Data		
IP degree of protection (IEC 60529)	IP66/IP67	IP66/IP67

Technical Data		
Variant	FX15/-P-060- LED	FX15/-N-050- Xenon flash tubes
<b>Mechanical Data</b>		
Enclosure material	Polyester (GRP), Glass fibre reinforced	Polyester (GRP), Glass fibre reinforced
Enclosure colour	Black	Black
Seal	O-ring seal	O-ring seal
Sealing material	Red silicone 70	Red silicone 70
Material dome	Polycarbonate, prismatic	Polycarbonate, prismatic
Wire guard material	Stainless steel	Stainless steel
Max. solid connection terminals	2.5 mm <sup>2</sup>	2.5 mm <sup>2</sup>
Max. finely stranded connection terminals	2.5 mm <sup>2</sup>	2.5 mm <sup>2</sup>
<b>Mounting / Installation</b>		
Mounting part material	Stainless steel	Stainless steel
Connection type	Screw terminal	Screw terminal
<b>Components</b>		
Drilled holes	3 x M20	3 x M20
Cable glands and entries	Can be ordered as accessories	Can be ordered as accessories
Stopping plugs	3 x dust cap	3 x dust cap
You can find more technical data online at <a href="http://r-stahl.com">r-stahl.com</a> . WebCode FX15A		

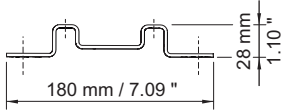
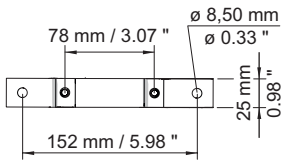
**Technical Drawings – Subject to Alterations**



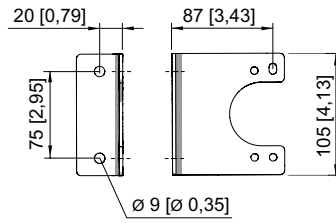
Accessories				
Figure	Description	Art. No.	Weight	kg
<b>Cable glands made of metal</b>				
	Ex d & Ex e cable gland for all types of unarmoured and braid armour cables (nickel plated brass) Type 20A2F, M20 x 1.5	243464 ▲	0.070	
	Ex d & Ex e cable entry with compound for all types of armoured cables (SWA, braided, tape) (nickel-plated brass) Type 20PX2K, M20 x 1.5	109428 ▲	0.240	
	Ex d & Ex e Cable entry with RapidEx sealing system for all types of unarmoured and braid armour cables (nickel-plated brass) Type 20PX2K-REX, M20 x 1.5	246649 ■	0.240	
	Ex d & Ex e Cable entry with compound gland for all types of unarmoured and braid armour cables (nickel plated brass) Type 20PXSS2K, M20 x 1.5	109441 ▲	0.200	
	Ex d & Ex e Cable entry with RapidEx sealing system for all types of unarmoured and braid armour cables (nickel-plated brass) Type 20PXSS2K-REX, M20 x 1.5	246605 ■	0.200	
	Ex d & Ex e cable gland for all types of armoured cables (SWA, braided, tape) (nickel plated brass) with unique compensating displacement seal system (CDS) Type 20T3CDS, M20 x 1.5	246561 ▲	0.280	
<b>Stopping plugs</b>				
	Stopping plug made of stainless steel M20x1,5 with external hexagon	251101 ▲	0.079	
<b>Mounting accessories</b>				
	Stainless steel L-bracket; standard — see dimensional drawings	221711 ▲	0.287	
	Adapter plate for pipe clamp fastening (available for FL6S, FX15, YL6S)	256519	0.630	
	Sun shield, stainless steel (available for FX15)	262077	0.200	
	Pipe clamp, R 1 1/2"	120819	0.470	
	Pipe clamp, R 1 1/4"	120812	0.500	
	Pipe clamp, R 2"	120823	0.500	
	Fastening bracket, stainless steel (available for FX15)	221712 ▲	0.155	

Spare Parts			
Figure	Description	Art. No.	Weight kg
<b>Flange</b>			
	Flange, ATEX, amber (available for FL6S, FX15, YL6S)	243407	1.190
	Flange, ATEX, blue (available for FL6S, FX15, YL6S)	243406	1.190
	Flange, ATEX, clear (available for FL6S, FX15, YL6S)	223578	1.190
	Flange, ATEX, green (available for FL6S, FX15, YL6S)	243405	1.190
	Flange, ATEX, red (available for FL6S, FX15, YL6S)	243408	1.190
	Flange, ATEX, yellow (available for FL6S, FX15, YL6S)	243409	1.190
<b>Fresnel lens</b>			
	Fresnel lens blue replacement	292141	0.180
	Fresnel lens red replacement	292147	0.180
<b>Lamp</b>			
	Xenon lamp (available for FL6S, FX15, YL6S)	223636	0.006
<b>PCB</b>			
	Connection PCB (available for FL6S, FX15, YL6S)	223579	0.020
	Electronic PCB, 115 V AC, 5 J (available for FL6S, FX15, YL6S)	223632	0.118
	Electronic PCB, 230 V AC, 5 J (available for FL6S, FX15, YL6S)	223580	0.100
	Electronic PCB, 24 V DC, 5 J (available for FL6S, FX15, YL6S)	223635	0.080

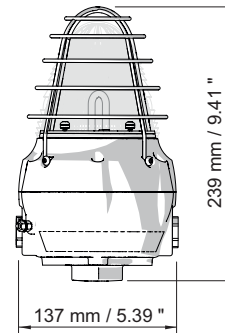
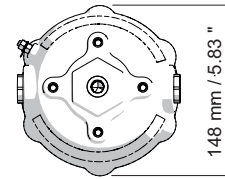
FX15 Beacons are supplied without a bracket. These must be ordered separately (see accessories table).



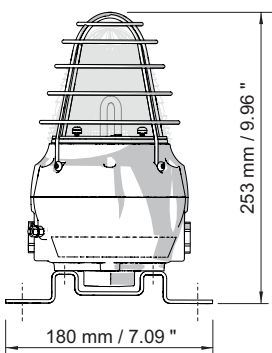
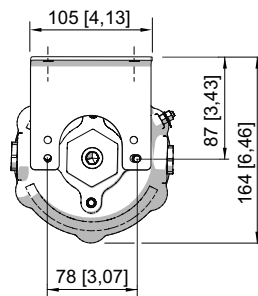
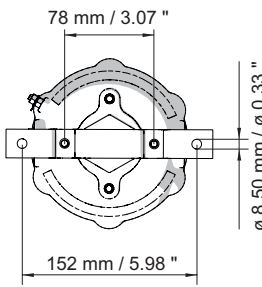
Backstrap bracket



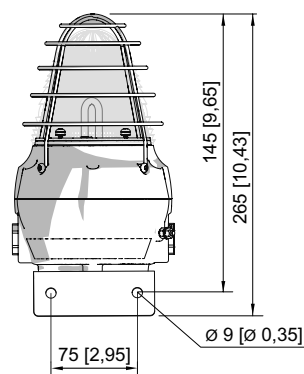
L-shaped bracket



FX15 Beacon



FX15 Beacon with backstrap bracket



FX15 Beacon with L-bracket