



- Corrosion-resistant, GRP Ex d enclosure
- Omnidirectional sounder max. 110 dB(A) @ 1m
- 3-stage alarm (DC) / 2-stage alarm, operate independently of each other
- Each with 32 selectable tones in accordance with international regulations
- Independent tone selection using a DIL switch for each pitch
- Volume control with 18 dB adjustment
- Blocking diode for line monitoring
- IP66 & IP67
- Lightweight (3.64 kg)

E5

WebCode YA6SA



Yodalex Super Series

Product series YA6S is designed to provide an audible alarm which can be used to alert, warn or draw attention to machine malfunction/start up or any number of safety related issues. Corrosion resistance is a key feature of the device which is ideally suited for applications in the harshest of environments both onshore and offshore.

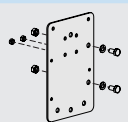

	ATEX / IECEx					
Zone	0	1	2	20	21	22
Installation in		•	•		•	•

Selection Table						
Pitch Certificates		2 ATEX (BAS), IECEx (BAS)				
Rated operational current	Rated operational voltage AC	Rated operational voltage DC	Product Type	Art. No.	PS	Weight kg
0.04 A	230 – 230 V	–	YA6S/C-N-EN-SF-A-ST-00-00-00	225185	80	3.640
0.076 A	115 – 115 V	–	YA6S/C-L-EN-SF-A-ST-00-00-00	225184	80	3.640
Pitch Certificates		3 Gas explosion protection EAC Dust explosion protection EAC ATEX (BAS), EAC (Sertium), IECEx (BAS), Russian Federation (TPB SER)				
Rated operational current	Rated operational voltage AC	Rated operational voltage DC	Product Type	Art. No.	PS	Weight kg
0.28 A	–	24 – 24 V	YA6S/C-D-RU-SF-A-ST-00-00-00	256351	80	3.640
Pitch Certificates		3 ATEX (BAS), IECEx (BAS)				
Rated operational current	Rated operational voltage AC	Rated operational voltage DC	Product Type	Art. No.	PS	Weight kg
0.25 A	–	48 – 48 V	YA6S/C-F-EN-SF-A-ST-00-00-00	225183	80	3.640
0.28 A	–	24 – 24 V	YA6S/C-D-EN-SF-A-ST-00-00-00	225182	80	3.640





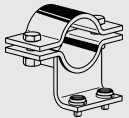
Additional gas groups and voltage variants are available; please use the selection table online at r-stahl.com. WebCode YA6SA
The tone table is available on the Internet at r-stahl.com.

Technical Data		
Variant	Pitch 2	Pitch 3
Explosion Protection		
Ambient temperature °C	-60 ... +60 °C	-60 ... +70 °C
Gas explosion protection IECEx	Ex d IIC T6 Gb	Ex d IIC T6 Gb
Gas explosion protection ATEX	⊕ II 2 G Ex d IIC T6 Gb	⊕ II 2 G Ex d IIC T6 Gb
Dust explosion protection IECEx	Ex tb IIIC T77 °C Db	Ex tb IIIC T75 °C Db
Dust explosion protection ATEX	⊕ II 2 D Ex tb IIIC T77 °C Db	⊕ II 2 D Ex tb IIIC T75 °C Db
Ambient temperature °C 2	-60 ... +70 °C	
Gas explosion protection IECEx 2	Ex d IIC T5 Gb	
Gas explosion protection ATEX 2	⊕ II 2 G Ex d IIC T5 Gb	
Dust explosion protection IECEx 2	Ex tb IIIC T87 °C Db	
Dust Explosion Protection ATEX 2	⊕ II 2 D Ex tb IIIC T87 °C Db	
Electrical Data		
Line monitoring	Yes	Yes
Tolerance	-10 – 10 %	-10 – 10 %
Acoustic Data		
Sound pressure level	max. 110 dB(A) @ 1 m	max. 110 dB(A) @ 1 m
Tone selection	Via DIL switch	Via DIL switch
Volume control	18 dB (A) adjustment	18 dB (A) adjustment
Ambient Conditions		
Operating temperature	-40 °C ... +60 °C	-60 °C ... +70 °C
Mechanical Data		
Enclosure material	Polyester (GRP), Glass fibre reinforced	Polyester (GRP), Glass fibre reinforced
Material mounting parts	Stainless steel	Stainless steel
Trumpet material	ABS, flame retardant	ABS, flame retardant
Connection terminals solid max.	2.5 mm ²	2.5 mm ²
Degree of protection IP (IEC 60529)	IP66/IP67	IP66/IP67
Connection terminals finely-stranded max.	2.5 mm ²	2.5 mm ²
Enclosure colour	Black	Black
Mounting / Installation		
Connection type	Screw terminal	Screw terminal
Components		
Drilled holes	2 x M20	2 x M20
Screw connections	Can be ordered as accessories	Can be ordered as accessories
Stopping plug	2 x dust cap	2 x dust cap

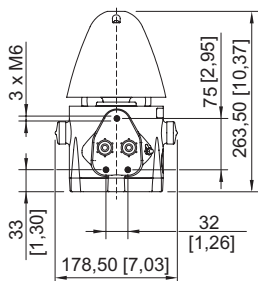
You can find more technical data online at r-stahl.com. WebCode YA6SA

Accessories and Spare Parts			
Figure	Description	Art. No.	Weight kg
Fixed adaptor			
	Adaptor plate for use in combination with pipe clamps	256519	0.630
Cable glands made of metal			
	Ex d & Ex e cable gland for all types of unarmoured and braid armour cables (nickel plated brass)	243464	0.070

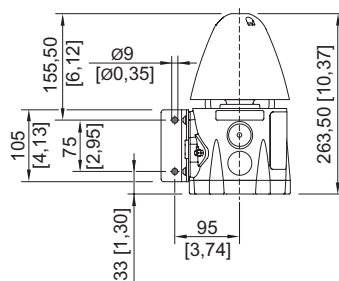
Accessories and Spare Parts

Figure	Description	Art. No.	Weight kg
Cable glands made of metal			
	Ex d & Ex e Compound barrier cable gland for all types of armoured cables (SWA, braided, tape) (nickel plated brass)	109428	0.240
	RapidEx liquid pour sealing system Cable entry with compound CMP-20PX2K-REX KLE MsNi M20 for reinforced conductors	246649	0.240
	Ex d & Ex e Compound barrier cable gland for all types of unarmoured and braid armour cables (nickel plated brass)	109441	0.200
	RapidEx liquid pour sealing system Cable entry with compound CMP-20PXSS2K-REX KLE MsNi M20	246605	0.200
	Ex d & Ex e cable gland for all types of armoured cables (SWA, braided, tape) (nickel plated brass) with unique compensating displacement seal system (CDS)	246561	0.280
Mounting accessories			
	Bracket assembly kit accessories made of stainless steel; long version	247371	0.280
Pipe clamp			
	R 1 1/2"	120819	0.470
	R 1 1/4"	120812	0.500
	R 2"	120823	0.500

Dimensional Drawings (All Dimensions in mm [inches]) – Subject to Alterations



GRP Audible Signal Series YA6S without L-Bracket



GRP Audible Signal Series YA6S with L-Bracket

