



- Corrosion-resistant, GRP Ex d enclosure
- Omnidirectional sounder max. 110 dB(A) @ 1 m
- 5 Joule xenon strobe
- 3-stage alarm (DC) / 2-stage alarm, operate independently of each other
- Each with 32 selectable tones in accordance with international regulations
- Independent tone selection using a DIL switch for each pitch
- Volume control with 18 dB(A) adjustment
- Xenon strobe with light enhancing fresnel lens
- Flash rate 1 Hz
- IP66 & IP67
- Lightweight (4.4 kg)

E5

WebCode **YL6SA**



Yodalex Super Series

Product Series YL6S is designed to provide both an audible and visual alarm which can be used to alert, warn or draw attention to machine malfunction/start up or any number of safety related issues. The audible and visual signals can be operated independently or as a combination unit. Corrosion resistance is a key feature of the device which is ideally suited for applications in the harshest of environments both onshore and offshore.

	ATEX / IECEx					
Zone	0	1	2	20	21	22
Installation in		•	•		•	•

Selection Table							
Pitch Certificates	2 ATEX (BAS), IECEx (BAS)						
Lens colour	Rated operational voltage AC	Rated operational voltage DC	Rated operational current	Product Type	Art. No.	PS	Weight kg
Blue	115 – 115 V	–	280 mA	YL6S/C-L-050-B-EN-SF-A-ST-00-00-00	225106	80	4.440
	230 – 230 V	–	115 mA	YL6S/C-N-050-B-EN-SF-A-ST-00-00-00	225114	80	4.440
Clear	115 – 115 V	–	280 mA	YL6S/C-L-050-C-EN-SF-A-ST-00-00-00	225101	80	4.440
	230 – 230 V	–	115 mA	YL6S/C-N-050-C-EN-SF-A-ST-00-00-00	225109	80	4.440
Green	230 – 230 V	–	115 mA	YL6S/C-N-050-G-EN-SF-A-ST-00-00-00	225115	80	4.440
Orange	115 – 115 V	–	280 mA	YL6S/C-L-050-A-EN-SF-A-ST-00-00-00	225105	80	4.440
	230 – 230 V	–	115 mA	YL6S/C-N-050-A-EN-SF-A-ST-00-00-00	225113	80	4.440
Red	115 – 115 V	–	280 mA	YL6S/C-L-050-R-EN-SF-A-ST-00-00-00	225104	80	4.440
	230 – 230 V	–	115 mA	YL6S/C-N-050-R-EN-SF-A-ST-00-00-00	225112	80	4.440
Yellow	115 – 115 V	–	280 mA	YL6S/C-L-050-Y-EN-SF-A-ST-00-00-00	225103	80	4.440
	230 – 230 V	–	115 mA	YL6S/C-N-050-Y-EN-SF-A-ST-00-00-00	225111	80	4.440

Selection Table

Pitch Certificates							
		3 ATEX (BAS), IECEx (BAS)					
Lens colour	Rated operational voltage AC	Rated operational voltage DC	Rated operational current	Product Type	Art. No.	PS	Weight kg
Blue	-	24 – 24 V	600 mA	YL6S/C-D-050-B-EN-SF-A-ST-00-00-00	225078	80	4.440
Clear	-	24 – 24 V	600 mA	YL6S/C-D-050-C-EN-SF-A-ST-00-00-00	225072	80	4.440
		48 – 48 V	420 mA	YL6S/C-F-050-C-EN-SF-A-ST-00-00-00	225081	80	4.440
Green	-	24 – 24 V	600 mA	YL6S/C-D-050-G-EN-SF-A-ST-00-00-00	225079	80	4.440
Orange	-	24 – 24 V	600 mA	YL6S/C-D-050-A-EN-SF-A-ST-00-00-00	225076	80	4.440
		48 – 48 V	420 mA	YL6S/C-F-050-A-EN-SF-A-ST-00-00-00	225087	80	4.440
Red	-	24 – 24 V	600 mA	YL6S/C-D-050-R-EN-SF-A-ST-00-00-00	225075	80	4.440
		48 – 48 V	420 mA	YL6S/C-F-050-R-EN-SF-A-ST-00-00-00	225086	80	4.440
Yellow	-	24 – 24 V	600 mA	YL6S/C-D-050-Y-EN-SF-A-ST-00-00-00	225074	80	4.440
		48 – 48 V	420 mA	YL6S/C-F-050-Y-EN-SF-A-ST-00-00-00	225084	80	4.440
Pitch Certificates							
		3 EAC (Sertium), Russian Federation (TPB SER)					
Lens colour	Rated operational voltage AC	Rated operational voltage DC	Rated operational current	Product Type	Art. No.	PS	Weight kg
Red	-	24 – 24 V	600 mA	YL6S/C-D-050-R-RU-SF-A-ST-00-00-00	262796	80	4.440

Additional gas group variants and local certifications are available; please use the selection table online at r-stahl.com. WebCode YL6SA
The tone table can be found online at r-stahl.com.

Technical Data

Variant	YL6S/-...-EN	YL6S/-...-RU
Explosion Protection		
Gas explosion protection IECEx	Ex d IIC T5 Gb	
Gas explosion protection ATEX	⊕ II 2 G Ex d IIC T5 Gb	
Gas explosion protection EAC		1 Ex d IIC/IIB T5 Gb 1 Ex d IIC/IIB T4 Gb
Dust explosion protection IECEx	Ex tb IIIC T95 °C Db	
Dust explosion protection ATEX	⊕ II 2 D Ex tb IIIC T95 °C Db	
Dust explosion protection EAC		1 Ex tb IIIC T95 °C Db 1 Ex tb IIIC T110 °C Db
Gas explosion protection IECEx 2	Ex d IIC T4 Gb	
Gas explosion protection ATEX 2	⊕ II 2 G Ex d IIC T4 Gb	
Dust explosion protection IECEx 2	Ex tb IIIC T110 °C Db	
Dust Explosion Protection ATEX 2	⊕ II 2 D Ex tb IIIC T110 °C Db	
Electrical Data		
Line monitoring	Yes	Yes
Tolerance	-10 – 10 %	-10 – 10 %
Acoustic Data		
Sound pressure level	max. 110 dB(A) @ 1 m	max. 110 dB(A) @ 1 m
Tone selection	Via DIL switch	Via DIL switch
Volume control	18 dB (A) adjustment	18 dB (A) adjustment

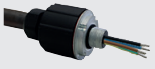

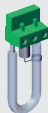
Combined Audible and Visual Signalling Devices

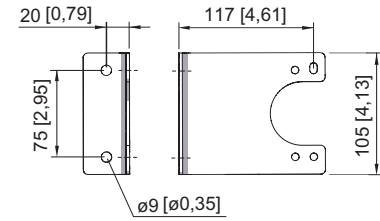
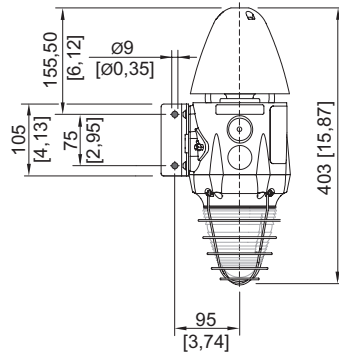
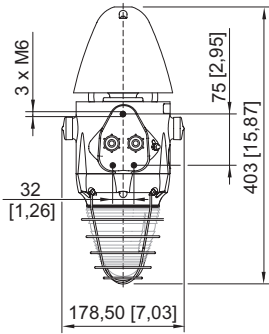
Series YL6S - Flameproof Version; max. 110 dB(A) @ 1 m / 5 J

STAHL

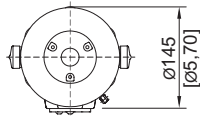
E5

Technical Data		
Variant	YL6S/-...-EN	YL6S/-...-RU
Ambient Conditions		
Ambient temperature	-60 °C ... +40 °C (For T5) -60 °C ... +55 °C (For T4)	-60 °C ... +40 °C (For T5) -60 °C ... +55 °C (For T4)
Operating temperature	-40 °C ... +45 °C	-50 °C ... +55 °C
Lighting Data		
Lamp	Xenon flash tubes	Xenon flash tubes
Flashbulb	5 J	5 J
Flash rate	1 Hz	1 Hz
Mechanical Data		
Degree of protection IP (IEC 60529)	IP66/IP67	IP66/IP67
Enclosure material	Polyester, Glass fibre reinforced	Polyester, Glass fibre reinforced
Material mounting parts	Stainless steel	Stainless steel
Trumpet material	ABS, flame retardant	ABS, flame retardant
Material dome	Polycarbonate, prismatic	Polycarbonate, prismatic
Material wire guard	Stainless steel	Stainless steel
Connection terminals solid max.	2.5 mm ²	2.5 mm ²
Connection terminals finely-stranded max.	2.5 mm ²	2.5 mm ²
Components		
Drilled holes	2 x M20	2 x M20
Stopping plug	2 x dust cap	2 x dust cap
You can find more technical data online at r-stahl.com . WebCode YL6SA		

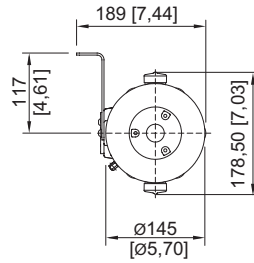
Accessories and Spare Parts				
Figure	Description	Art. No.	Weight kg	
Cable glands				
	Ex e adapter for ATEX - 20 °C to +50/60 °C	264252	0.270	
PCB termination				
	PCB assembly termination, for 5 Joule Xenon beacon only	223579	0.020	
Xenon tube				
	Replacement xenon tube assembly	223636	0.006	
A lens wire guard (VA) and bracket (VA) are supplied as standard.				



L-Bracket



GRP
Combination Signal Series YL6S without L-Bracket



GRP Combination Signal Series YL6S with L-Bracket